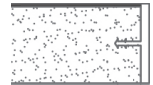
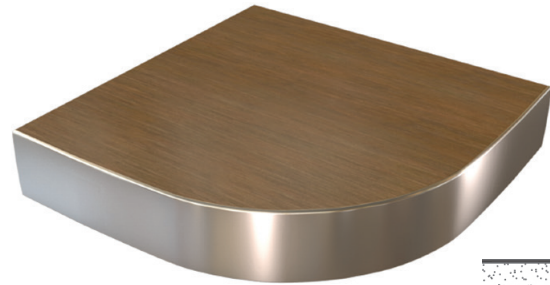


1106

SPECIFICATION SHEET

METAL T-MOLD EDGE LAMINATE

The 1106 series table top includes 1-1/4" high density PB core with high pressure flush laminate surface, with 1-1/4" smooth metal t-mold edge and a phenolic backer balance sheet on the underneath side. This table comes standard with 3" radius corners.



EDGE PROFILE

DIMENSIONS

Wood grain direction is as shown in thumbnail unless otherwise noted. See resources page for edge options.

	W x L	MODEL #		W x L x L	MODEL #
<p>RECTANGULAR SIZES</p>	24" x 20"	11062420	<p>CLIPPED CORNER SIZES</p>	24" x 42" x 23"	11062442LCL
	24" x 30"	11062430		24" x 42" x 23"	11062442RCL
	24" x 42"	11062442		24" x 48" x 27"	11062448LCL
	24" x 48"	11062448		24" x 48" x 27"	11062448RCL
	30" x 36"	11063036		24" x 60" x 45"	11062460LCL
	30" x 42"	11063042		24" x 60" x 45"	11062460RCL
	30" x 48"	11063048		30" x 60 x 45"	11063060LCL
30" x 60"	11063060	30" x 60 x 45"	11063060RCL		
<p>SQUARE SIZES</p>	24" x 24"	11062424	<p>TRAPEZOID SIZES</p>	30" x 48" x 42" 1106304842T	
	30" x 30"	11063030			
	36" x 36"	11063636			
	42" x 42"	11064242			
	48" x 48"	11064848			
<p>OVAL SIZES</p>	30" x 24"	110630240	<p>CIRCULAR SIZES</p>	24"	110624D
	30" x 60"	110630600		30"	110630D
<p>RACE TRACK SIZES</p>	30" x 60"	11063060R	36"	110636D	
	36" x 72"	11063672R	42"	110642D	
			48"	110648D	

GET A QUOTE

Submit the following product information to contactus@fcius.com for a quote.

1. Product Name
2. Size
3. Model Number
4. Upgrades
5. Quantity

