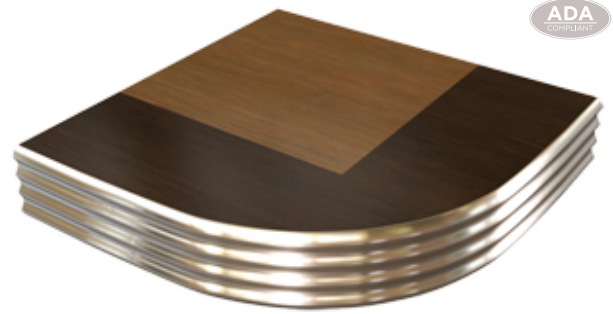




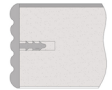
# 1307

## SPECIFICATION SHEET



### RIBBED METAL T-MOLD EDGE INLAY LAMINATE

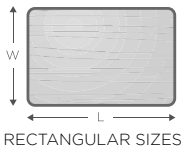
The 1307 Series table top includes 1-1/4" high density PB core with high pressure laminate surface, with 2" inlay, ribbed metal T-mold edge, and a phenolic backer balance sheet on the underneath side. This table comes standard with 2.5" radius corners.



EDGE PROFILE

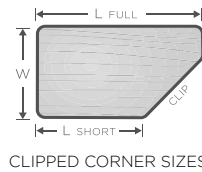
### DIMENSIONS

Wood grain direction is as shown in thumbnail unless otherwise noted. See resources page for edge options.



RECTANGULAR SIZES

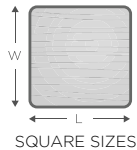
W x L	MODEL #
24" x 20"	13072420
24" x 30"	13072430
24" x 42"	13072442
24" x 48"	13072448
30" x 36"	13073036
30" x 42"	13073042
30" x 48"	13073048
30" x 60"	13073060



CLIPPED CORNER SIZES

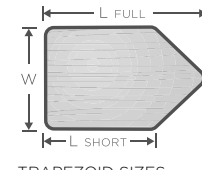
W x L x L	MODEL #
24" x 42" x 23"	13072442LCL
24" x 42" x 23"	13072442RCL
24" x 48" x 27"	13072448LCL
24" x 48" x 27"	13072448RCL
24" x 60" x 45"	13072460LCL
24" x 60" x 45"	13072460RCL
30" x 60 x 45"	13073060LCL
30" x 60 x 45"	13073060RCL

30" x 48" x 42"	1307304842T
-----------------	-------------

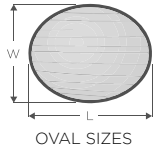


SQUARE SIZES

24" x 24"	13072424
30" x 30"	13073030
36" x 36"	13073636
42" x 42"	13074242
48" x 48"	13074848

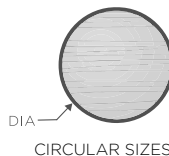


TRAPEZOID SIZES



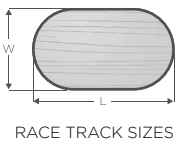
OVAL SIZES

30" x 24"	13073024O
30" x 60"	13073060O



CIRCULAR SIZES

DIAMETER	MODEL #
24"	130724D
30"	130730D
36"	130736D
42"	130742D
48"	130748D



RACE TRACK SIZES

30" x 60"	13073024R
36" x 72"	13073672R

### GET A QUOTE

Submit the following product information to [contactus@fcius.com](mailto:contactus@fcius.com) for a quote.

1. Product Name
2. Size
3. Model Number
4. Upgrades
5. Quantity

