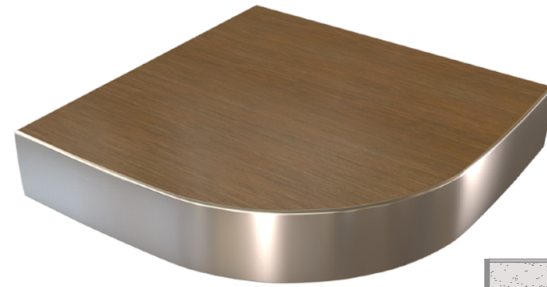




1106

SPECIFICATION SHEET



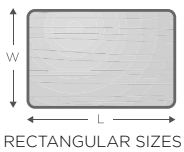
EDGE PROFILE

METAL T-MOLD EDGE LAMINATE

The 1106 Series table top includes 1-1/4" high density PB core with high pressure flush laminate surface, with 1-1/4" smooth metal T-mold edge and a phenolic backer balance sheet on the underneath side. This table comes standard with 2.5" radius corners.

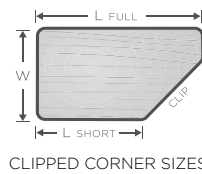
DIMENSIONS

Wood grain direction is as shown in thumbnail unless otherwise noted. See resources page for edge options.



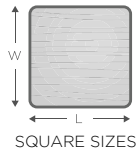
RECTANGULAR SIZES

W x L	MODEL #
24" x 20"	11062420
24" x 30"	11062430
24" x 42"	11062442
24" x 48"	11062448
30" x 36"	11063036
30" x 42"	11063042
30" x 48"	11063048
30" x 60"	11063060



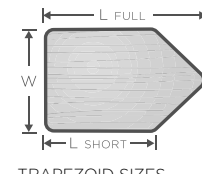
CLIPPED CORNER SIZES

W x L x L	MODEL #
24" x 42" x 23"	11062442LCL
24" x 42" x 23"	11062442RCL
24" x 48" x 27"	11062448LCL
24" x 48" x 27"	11062448RCL
24" x 60" x 45"	11062460LCL
24" x 60" x 45"	11062460RCL
30" x 60" x 45"	11063060LCL
30" x 60" x 45"	11063060RCL



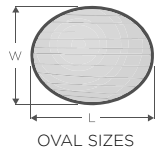
SQUARE SIZES

24" x 24"	11062424
30" x 30"	11063030
36" x 36"	11063636
42" x 42"	11064242
48" x 48"	11064848



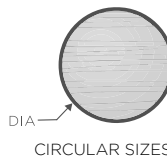
TRAPEZOID SIZES

30" x 48" x 42"	1106304842T
-----------------	-------------



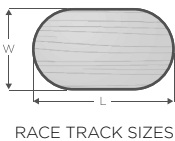
OVAL SIZES

30" x 24"	11063024O
30" x 60"	11063060O



CIRCULAR SIZES

DIAMETER	MODEL #
24"	110624D
30"	110630D
36"	110636D
42"	110642D
48"	110648D



RACE TRACK SIZES

30" x 60"	11063024R
36" x 72"	11063672R

GET A QUOTE

Submit the following product information to contactus@fcius.com for a quote.

1. Product Name
2. Size
3. Model Number
4. Upgrades
5. Quantity

